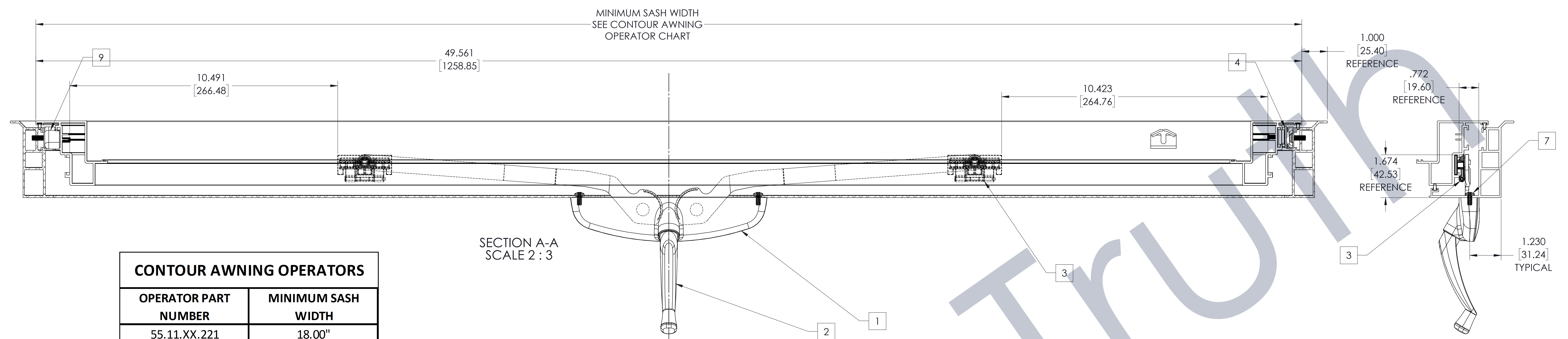
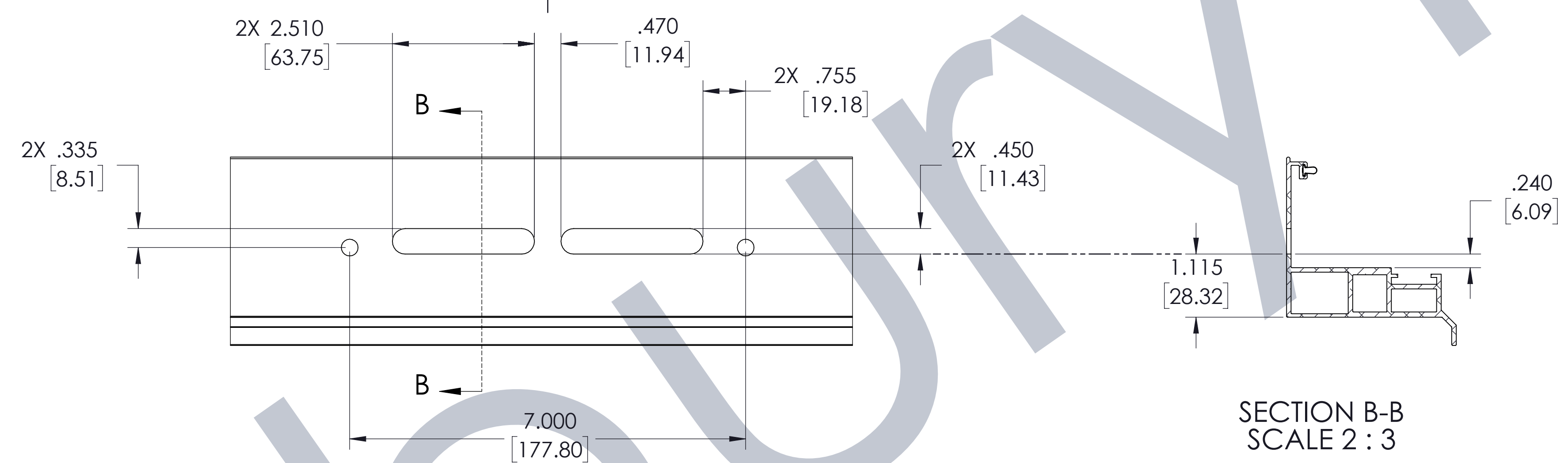


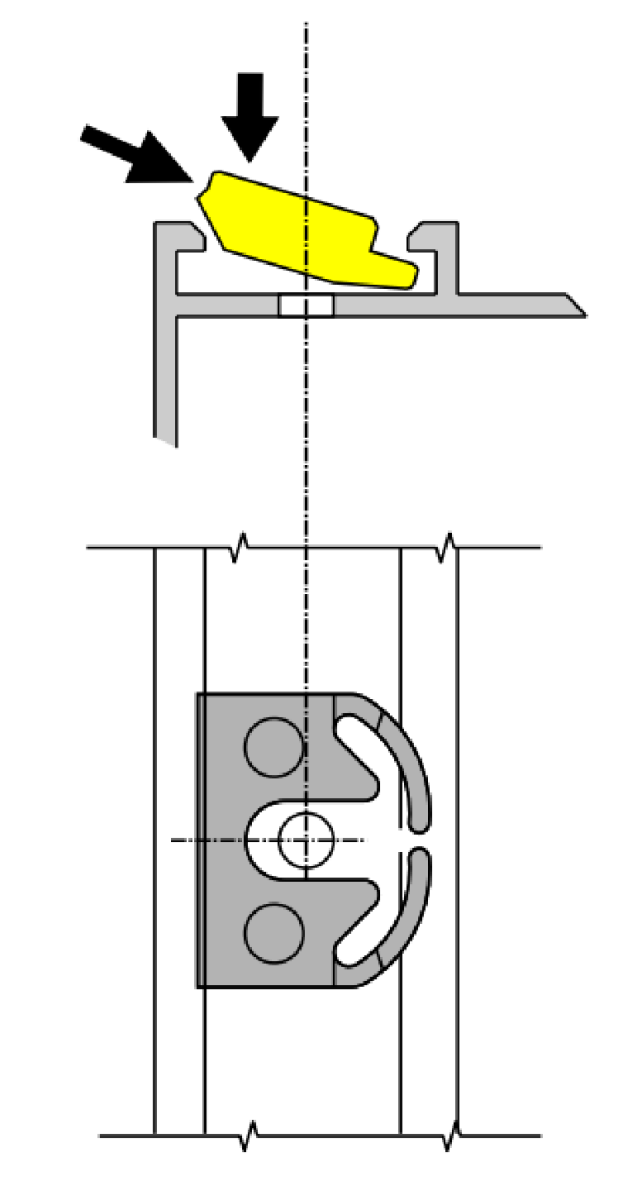
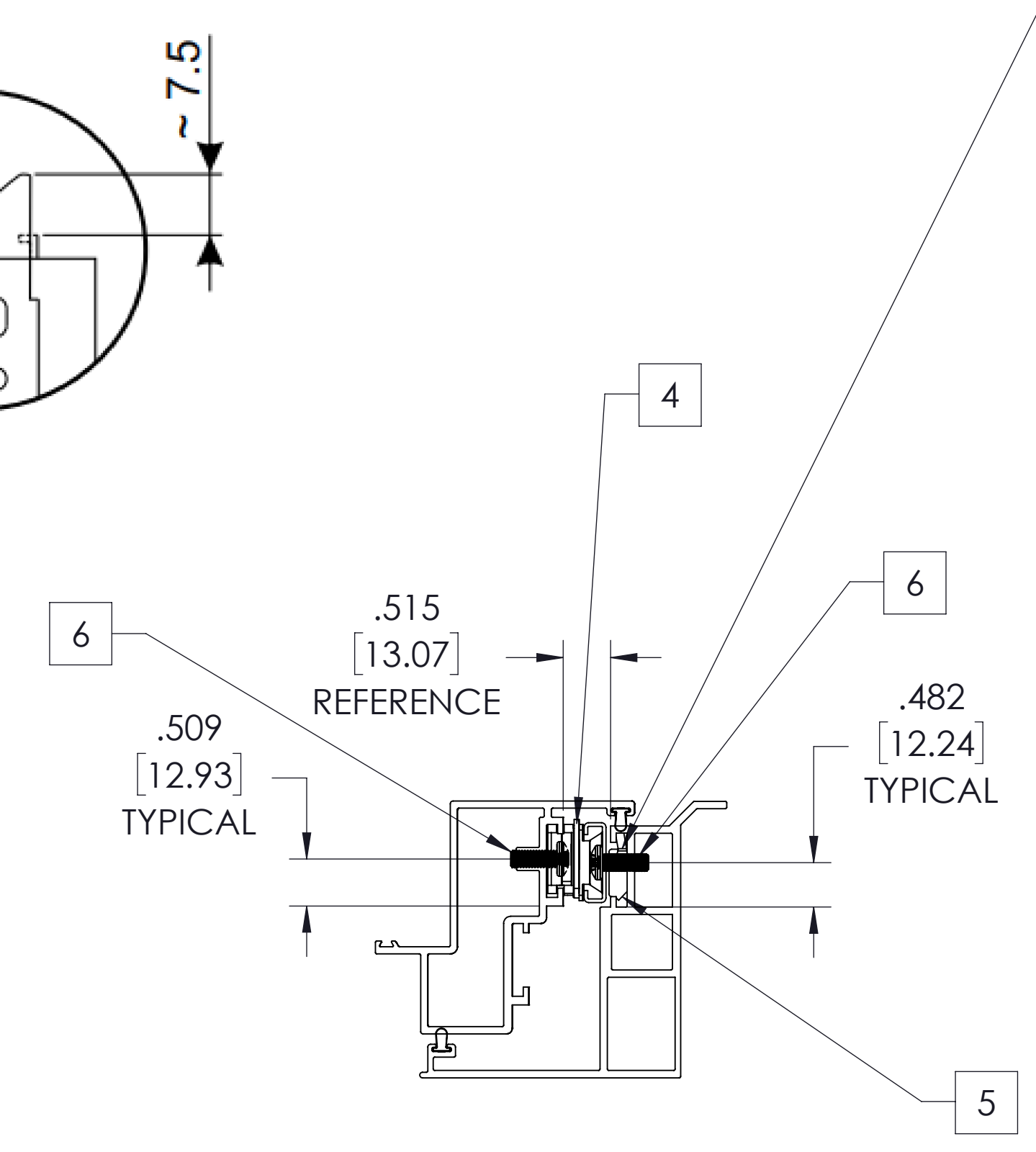
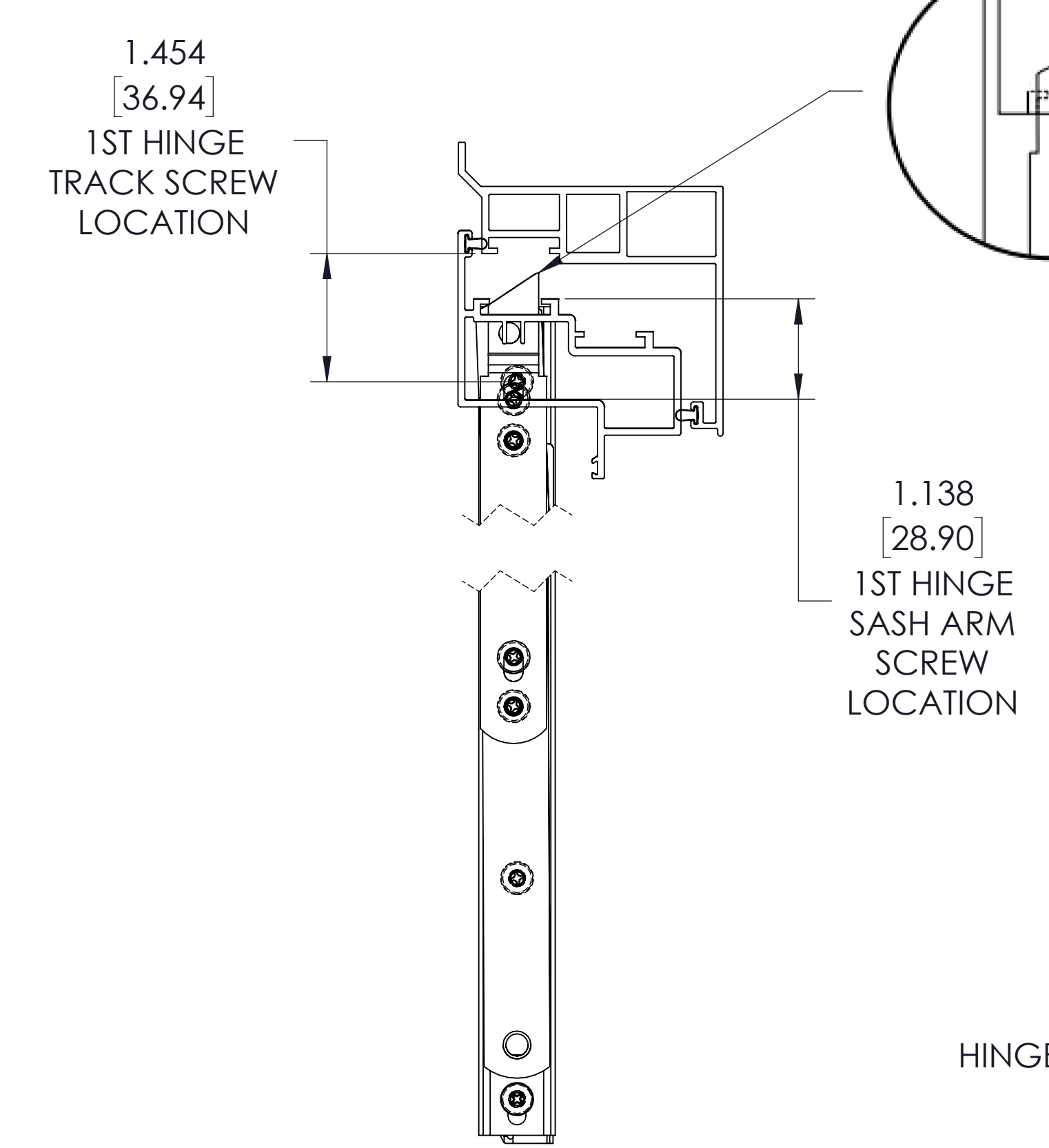
NO.	REV.	DATE	BY
1	CREATED		



OPERATOR PART NUMBER	MINIMUM SASH WIDTH
55.11.XX.221	18.00"
55.12.XX.221	25.00"
55.10.XX.221	29.00"



ITEM NO.	PART NUMBER	DESCRIPTION	QTY.
1	55.10.XX.221	AWNING OPERATOR, PIVOT SHOE, 27.75. CONTOUR	1
2	11454	HANDLE	1
3	15146	EuroGroove Assembly	2
4	08360000	GS HD-TOP/SIDE HUNG 16" - EURO GROOVE	2
5	01971	Giesse hinge shim	20
6	N-A	SCREW, 10-32 X 1/2 T23 PH PH MS S518-8	20
7	N-A	SCREW, 10-24 X 3/8 F PH PH MS YZ	2



Item code	Description	PROFILE CROSS - SECTION	Bag width	Stack	Arm length (mm)	Loose rivet	TOP HUNG Opening angle	TOP HUNG Max-imum height (mm)	TOP HUNG Max-imum width (mm)	TOP HUNG Max-imum weight (kg)	SIDE HUNG Possible opening angle	SIDE HUNG Max-imum height (mm)	SIDE HUNG Max-imum width (mm)	SIDE HUNG Max-imum weight (kg)	Base Riv	Hinge per pack
08359	GS HD - 10" type TS	C001-C002-C003-C004-C005-C006-C012	22	Euro groove central gasket	259	No	50°	650	1500	50	50°/84°	1500	660	35	X	6
08360	GS HD - 16" type TS	C001-C002-C003-C004-C005-C006-C012	22	groove central gasket	412	No	30°/50°	800	1500	100/55	30°/90°	1600	700	60/42	X	6

FOR PROPER HINGE SELECTION AND MORE INFORMATION ON GIESSE EUROGROOVE HINGES PLEASE SEE GIESSE CATALOG SECTIONS 10249000 4-BAR HINGE INSTRUCTION EURO GROOVE AND HD TYPE TS

TRUTH HARDWARE MAKES NO WARRANTY OR REPRESENTATION OF ANY KIND, EXPRESS OR IMPLIED, WITH RESPECT TO QUALITY, CONTENT, FORM, PERFORMANCE, FITNESS FOR PURPOSE, MERCHANTABILITY OR OTHERWISE OF THE APPLICATION DRAWINGS PROVIDED. THESE DRAWINGS ARE USED AT THE RECIPIENT'S OWN RISK AND TRUTH HARDWARE HAS AND SHALL HAVE NO RESPONSIBILITY FOR RECIPIENTS OR ANY THIRD PARTIES' USE OF THESE DRAWINGS OR ANY OF THE INFORMATION CONTAINED THEREIN. THE RECIPIENT AGREES TO INDEMNIFY, DEFEND, AND HOLD HARMLESS TRUTH HARDWARE AND ITS EMPLOYEES AND THEIR SUCCESSORS AND ASSIGNS FROM AND AGAINST ANY AND ALL CLAIMS, SUITS, LOSSES, DAMAGES OR COSTS INCURRED FROM USING THESE DRAWINGS OR ANY CONTENT THEREOF.

Amesbury Truth
 700 West Bridge Street
 Owatonna, MN 55060
 Telephone 507-451-5620

THIS DRAWING IS THE PROPERTY OF TRUTH HARDWARE. THE INFORMATION THEREON IS TO BE TREATED AS CONFIDENTIAL. IF IT IS NOT TO BE USED, COPIES OR DISCLOSED TO OTHER PARTIES WITHOUT OUR WRITTEN CONSENT.	DATE: 2/3/2022
DRAWN BY: M. NEFF	SCALE: 1:4
CHECKED BY: MDNI	
PARTNAME: CONTOUR EURO AWNING OPERATOR	
PROFILE: GENERIC ALUM	DRAWING NO.: 21257V-1
REVISION: A	DATE: 2/3/2022